



Digiplus

Clear, simple and safe control of stage and special lighting (e.g. working lights, rehearsal lighting, blue light, auditorium lighting).

Flexible configuration of both the scope of functions and the user interface, depending on the requirements of the overall system.

Considerable simplification of the electrical installation, particularly with respect to extending the system.

Using the DMX gate or the Profigate (depending on the way in which the equipment is networked), auditorium lighting can be controlled from the auxiliary console and the working lights from the lighting console.

Several control locations can be set up.

In contrast to traditional auxiliary consoles, digital auxiliary consoles boast much greater simplicity when it comes to installation, start up and maintenance of auxiliary functions.

Digiplus can be mounted either in a small console unit, which matches the transtechnik NT range, or as a wall panel.

The various operating screens, including a topographic representation of the theater, are easily grasped and allow even inexperienced staff rapid, accurate access to the functions they need.

All the necessary switching operations available on traditional consoles are performed using keys, switches, bar charts and memories. Acknowledgements from contactors, voltages and current levels can all be monitored and displayed in realtime.

In an Ethernet network, Digiplus can, in addition to its switching function, also take on the role of an SLX12 auditorium lighting controller, i.e. it can evaluate, save and forward the lighting protocols from the lighting consoles. Thus, lighting can be controlled from all the various control locations (e.g. in the auditorium or by the stage manager), even if the lighting consoles are not switched on.

The system uses special industrial quality PC assemblies that fulfill the more stringent demands concerning operating safety, reliability and ambient conditions. Profibus, the fieldbus system used, guarantees an extremely reliable and rapid transfer of data.

Digiplus

Technical details

Desk console

Dimensions: 80 (220 at the rear) x 560 x 555 mm (H x W x D)

Weight: approx. 19 kg

Computer

Type: Industrial quality PC

CPU: Pentium II

Clock frequency: 166 MHz

RAM: 32 MB

Flash disk: 32 MB

Graphics: internal or external X VGA monitor

Monitor

Resolution: 1024 x 768

Color depth: 24 bit

Installation size: 350 x 265 x 24 mm (H x W x D)

Contrast: 150:1

Touch controller: ELO Accu Touch 2210 serial

Safety

Compliant with the European Standard EN 50170

Connections

Network: 230 V AC

Profibus: Choice between 9-pin Sub-D or 4-pin XLR, can be terminated internally

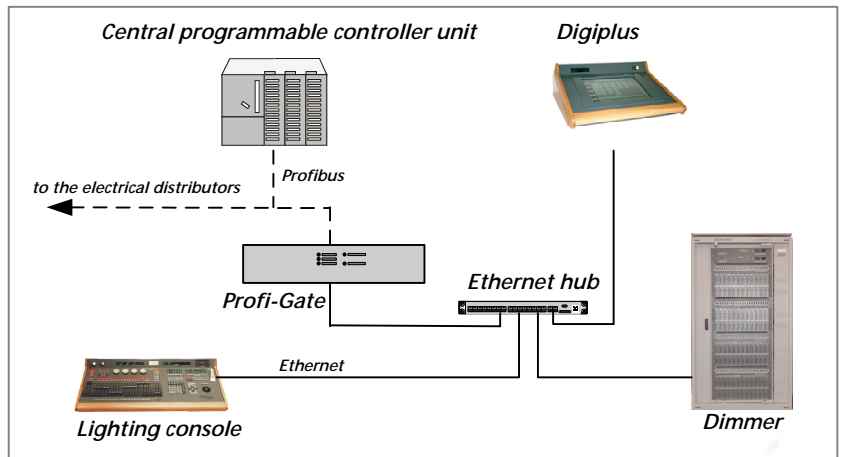
Ethernet: 10BaseT (TP)

Digital inputs: 8 x 24 V inputs, 25-pin Sub-D

Keyboard: 5-pin DIN, PS/2

Mouse: 5-pin DIN, PS/2

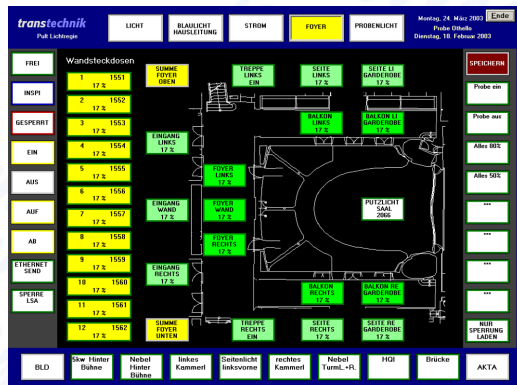
Ethernet networking



Examples of operating views

Foyer:

With but a few exceptions, all the keys on this topographic representation of the foyer can be dimmed.



Show

The show list makes it possible to group cues to form a show, to save them so that they are easily identified and to call them up:

- Max. 999 shows, each with up to 999 cues
- Drag and drop operation
- Separate patch list for each show

Cue storage:

Cue storage acts as a backup for the lighting console. Lighting cues issued from the lighting console can be stored and sent again.

